

# Anne Fellner & Burkhard Beschow *Castle of Insolence*

24 June — 10 July 2017

By appointment only:

+33 6 66 88 94 33

+33 6 09 46 91 79

tonus.yo@gmail.com

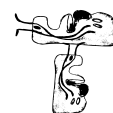
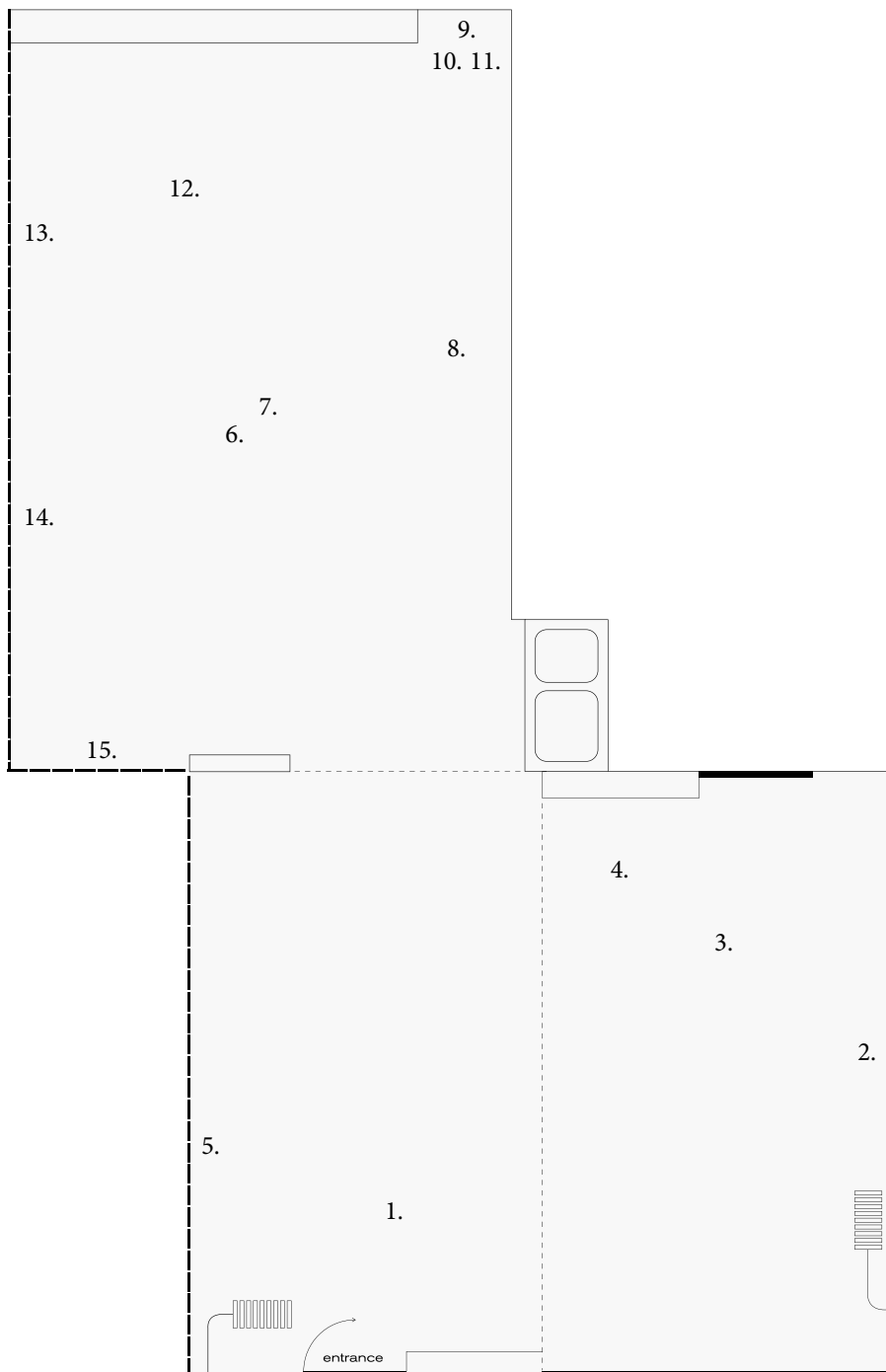
1. *Palace I*, 2017, velour, nails
2. *Castle of Insolence*, 2017, oil on canvas
3. *Shapes I*, 2017, cardboard, cotton, watercolour paper, coffee
4. *Shapes II*, 2017, cardboard, cotton, watercolour paper, coffee
5. *Gossip or Fairytale*, 2017, oil on canvas
6. *Untitled (Castle of Insolence) I*, 2017, book props, pipe cleaners, cardboard, nails, fabric, pigment, paint
7. *Shapes III*, 2017, cardboard, cotton, watercolour paper, coffee
8. *Untitled (Castle of Insolence) II*, 2017, book props, pipe cleaners, cardboard, nails, fabric, pigment, paint
9. *Untitled (Butterfly)*, 2016–17, oil on canvas
10. *Untitled (Butterfly) II*, 2017, oil on canvas
11. *Untitled (Garden)*, 2017, oil on canvas
12. *Palace II*, 2017, velour, nails
13. *Untitled (Birds)*, 2017, oil on canvas
14. *Untitled (Garden) II*, 2017, oil on canvas
15. *Fly*, 2017, oil on canvas

*O mortal man, who livest here by toil,  
Do not complain of this thy hard estate;  
That like an Emmet thou must ever moil,  
Is a sad Sentence of an ancient Date:  
And, certes, there is for it Reason great;  
For, though sometimes it makes thee weep and wail,  
And curse thy Star, and early drudge and late;  
Withouten That would come a heavier Bale,  
Loose life, unruly passions, and diseases pale.*

(Excerpt from the poem *The Castle of Indolence* written by James Thomson in 1748)

*Inside the mood is edgy. People having intense conversations jostle each other. A glass of champagne (or is it pils) spills all over someone's overcoat. Chills run down spines and the evening is ruined.*

(*Castle of Insolence* by Anne Elizabeth Halley Fellner)



TONUS  
4, rue de la Procession  
75015 Paris  
tonus-yo.tumblr.com

Upcoming:

September:  
Hugo Avigo

October:  
Heike-Karin Foell  
curated by Maurin Dietrich  
& Cathrin Mayer